

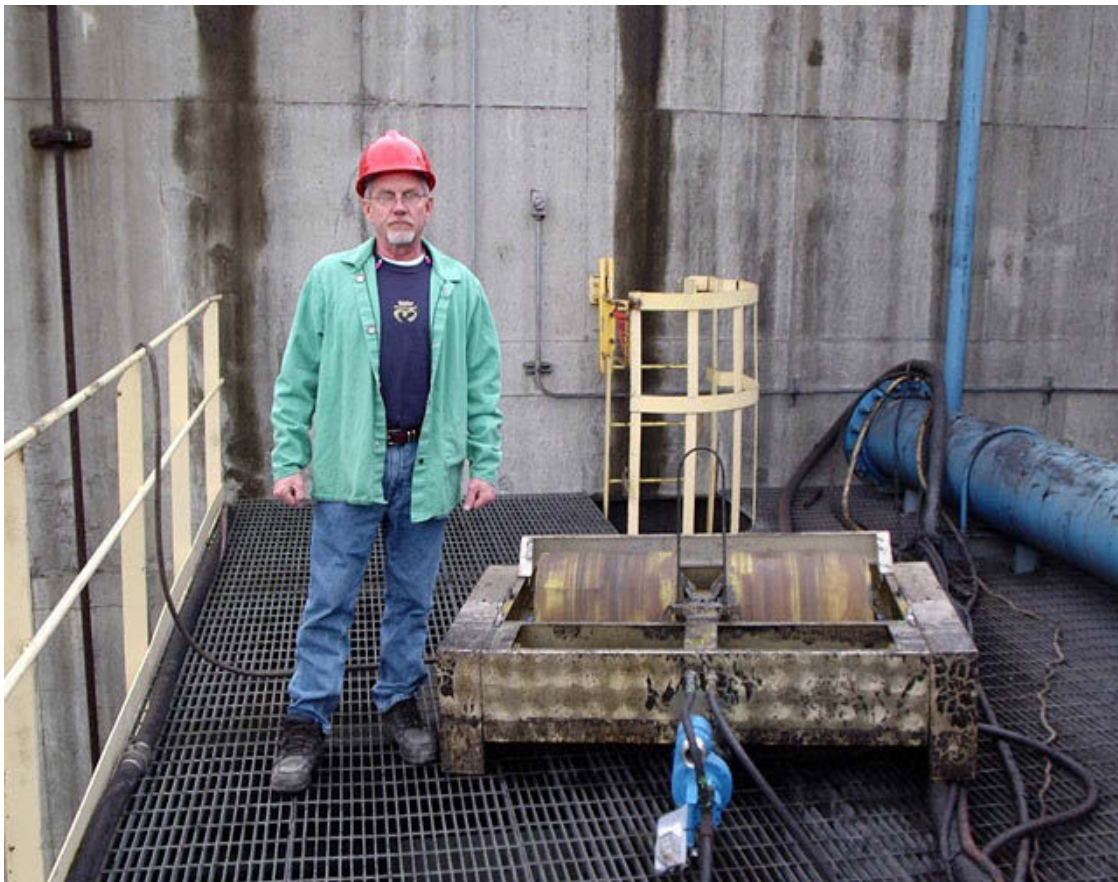


SkimOIL, Inc
103 W. Weaver Street
Carrboro, NC 27510
(314) 579-9755

Industrial Solutions Since 1995

www.skimoil.com / EMAIL: sales@skimoil.com

#FDS34RS Technical Description



SkimOIL's #FDS34RS is one of the most popular oil skimmers we offer. The original design concept was patented in 1990. Thousands of SkimOIL drum skimmers have been sold worldwide and proven themselves both in emergency response but also industrial applications. The fact that the skimmer is suitable for continuous duty is a testament to the design concept. It is suitable for oil spill response or industrial use. Due to its shallow draft and lightweight design (74 lbs / 33.5 kg), the #FDS34RS skimmer is ideal for cleanup in shallow waters such as creeks, rivers and lakes as well as harbors and near shore.

SkimOIL Drum Skimmers are able to recover a wide range of oils and sheen, from diesel to crude oils.



SkimOIL, Inc
103 W. Weaver Street
Carrboro, NC 27510
(314) 579-9755

Industrial Solutions Since 1995

www.skimoil.com / EMAIL: contact@skimoil.com

The #FDS34RS skimmer features heavy-duty high density Polyethylene drums, which are resistant to impact and abrasion. They not only serve as the rotating oleophilic element that selectively recovers the oil from water, they also provide buoyancy for the skimmer. The skimmer can draw oil in from all directions. The drum material is resistant to many chemicals found in industrial pits, sumps, separators and tanks. The self-adjusting wiper blades recover oil from the face and side of the drums as they rotate. The wipers can easily be replaced without tools.



Drive is provided for the drums by a centrally mounted gearbox (provides even weight distribution), this gearbox provides the torque necessary to turn the drums in heavy oils as well as allowing for fine control of the drum speed. The drum shafts are supported by self-aligning bearings. This is all mounted in a lightweight anodized marine grade aluminum frame with open and steeply inclined pathways that direct recovered oil to the collection sump. The open design facilitates cleaning and removal of any debris or trash. A removable trash screen prevents larger items entering the recovered oil pump.

The #FDS34RS is capable of recovering both light and heavy oils with very low water content - typically around only 3%. It may be fitted with either an air or hydraulic drive motor. We offer a choice of pumps in different materials to suit the application. The skimmer may be fitted with steam coils as an option to provide heat that warms the oil that's being recovered (to aid pumping and prevent freezing) as well as melting ice surrounding the skimmer.





SkimOIL, Inc
103 W. Weaver Street
Carrboro, NC 27510
(314) 579-9755

Industrial Solutions Since 1995

www.skimoil.com / EMAIL: contact@skimoil.com

The #FDS34RS is offered with either the original smooth drums or the latest patented Grooved Drums which can achieve higher oil recovery rates. The Grooved Drum design has been extensively tested by the Ohmsett test facility and researched by the University of California, Santa Barbara. This skimmer has also been independently tested by Environment Canada, CEDRE France, CRREL (Cold Regions Research and Engineering Laboratory). Test reports are available on request.

Specifications;

Smooth Drum nameplate capacity:	35 gpm / 8 cu.m per hour*
Grooved Drum nameplate capacity:	90 gpm / 20 cu.m per hour.**
Number of drums:	2 (Polyethylene HD)
Frame:	Anodized marine grade aluminum***
Handles and tether points:	Included
Wiper blades ;	Self-adjusting (spring loaded).
Spare wiper blades	included.
Wiper retainer:	Mounted with stainless steel pins & springs
Dimensions:	52.5 x 40.5 x 18 inch / 1.33 x 1.02 x 0.46m (without aux.floats or lifting cable)
Weight:	74 lbs / 33.5 kg (without floats) 83 lbs / 37.6 kg (with floats)
Drive:	Pneumatic or hydraulic
Max operating temp:	158 F / 70 C
Sump coupling:	3 inch female camlock
Draft light:	3 inches / 75 mm (may vary according the pump)
Lifting point:	Certified wire
Air requirements (for pneumatic models) ;	
Skimmer only:	5 to 15 cfm, 50 to 100 psi.
Skimmer and E1 diaphragm pump :	10 to 35 cfm, 50 to 100 psi.

Optional: Spares Kit, Disc and Brush Inserts, Trough Guard, Steam Coils

* Nameplate capacity verified by the US Coast Guard.

** Tested at the Ohmsett test facility according to ASTM F2709



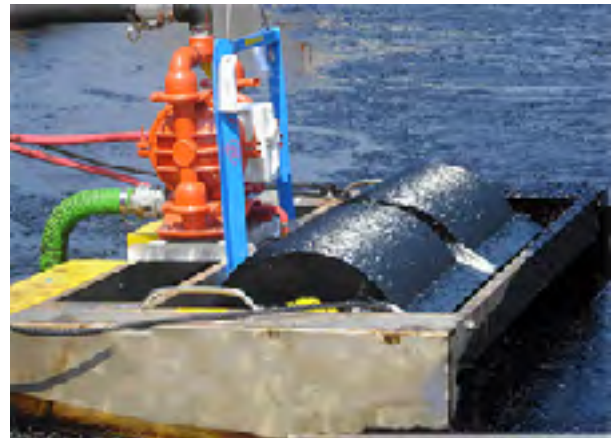
SkimOIL, Inc
103 W. Weaver Street
Carrboro, NC 27510
(314) 579-9755

Industrial Solutions Since 1995

www.skimoil.com / EMAIL: contact@skimoil.com

Configurations;

The skimmer may be supplied with pneumatic or hydraulic motor with a choice of recovered oil pumps - air operated diaphragm or hydraulic driven submersible (S/E150).



The optional diaphragm pump may be remotely positioned or mounted on the skimmer for high head applications



The skimmer can be connected to a vacuum truck to suck out recovered oil. The drums may be driven by the compressed air provided by the trucks braking system.

Hydraulically operated skimmers may be delivered with a diesel or electric driven hydraulic power pack.



Skimmer with S/E150 pump and S/D10 diesel hydraulic power pack.



10 electric hydraulic power pack



103 W. Weaver Street Carrboro, NC 27510

Tel: +1 (314) 579 9755

E-mail: contact@skimoil.com

Web Page: www.skimoil.com

Diesel-Hydraulic Power Pack Technical Description



The S/D10 is a compact and portable diesel driven hydraulic power unit for operating a range of equipment. Typically it is packaged with drum skimmers fitted with our S/E150 recovered oil transfer pump. Alternatively it is offered to power the S/E150 alone or Hydraulically Operated Pressure Washer.

It features an electric start diesel engine mounted in a steel cage frame fitted with controls. Handles and solid wheels are fitted so that the unit can be moved around the site. The open style allows excellent access for maintenance.

The S/D10 has a precision cut control panel with valves to control flow of the two hydraulic circuits (skimmer & pump). Twin hydraulic pressure gauges show the working pressures.

A hydraulic tank is mounted above the hydraulic pump and fitted with level / temperature gauge, filter and filler/strainer.



103 W. Weaver Street Carrboro, NC 27510

Tel: +1 (314) 579 9755

E-mail: contact@skimoil.com

Web Page: www.skimoil.com

Specifications;

Drive: 13hp / 9.9kW water cooled Kubota diesel engine with 12 Volt electric start.

Spark arrestor: Incorporated in the muffler

Max Hydraulic output (tandem pump):
Skimmer: 6 gpm / 23 lpm @ 2500 psi / 172 bar
E150 Pump: 4 gpm / 15 lpm @ 2500 psi / 172 bar
Variable flow controls

Frame: Skid mount with lifting Bracket.

Hydraulic tank: 12.5 gallons / 47 litres. Spin on return filter, fluid level and temp gauges, tank top filler/strainer.

Fuel tank: 4 gallons / 15.14 litres

Fuel consumption: 0.826 gallon per hour (3600 rpm)

Hydraulic Quick Couplings: Stainless steel

Lifting: Central lift point

Dimensions: 57 x 36 x 42 inch / 1.45 x 0.91 x 1.07m

Weight: 490 lbs / 218 kg Dry
610 lbs / 277 kg Wet

Note: The handles and wheels are removed for packaging.
Hydraulic fluid not included with units.

Optional;
Spares kit, Engine over speed protection valve.